



Chandler Road, Loughton, IG10

BUTLER & STAG



**Guide Price £475.000 -
£500.000.**
**Open Day Saturday The 30th
January 2021**
**Enviably positioned, this
delightful three bedroom
end of terraced family home
is in a popular location of
Loughton.**



Freehold

- End Of Terraced Family Home
- Spacious Kitchen/Dining Area
- Chain Free
- Three Bedrooms
- Off Street Parking
- West Facing Garden

This stunning example of a family home is arranged over two floors. Accommodation comprising of an entrance hall, a spacious living room, a dining area alongside a fully fitted kitchen and a downstairs WC.

On the first floor there are three bedrooms, as well as a family bathroom.

Externally, you are met by a patio area which is perfect for those summer nights with the rest of the garden laid to lawn. To the front of the property there is a paved driveway which allows access for off street parking for two/Three vehicles.

Loughton is known for its scenic views and being on the border of Epping Forest. It has excellent transport links into London from Loughton underground station, with the M11 and M25 being close by. With its highly regarded state and private schools within easy reach, its stylish, popular boutiques and abundance of eateries/bars makes it a desirable location.

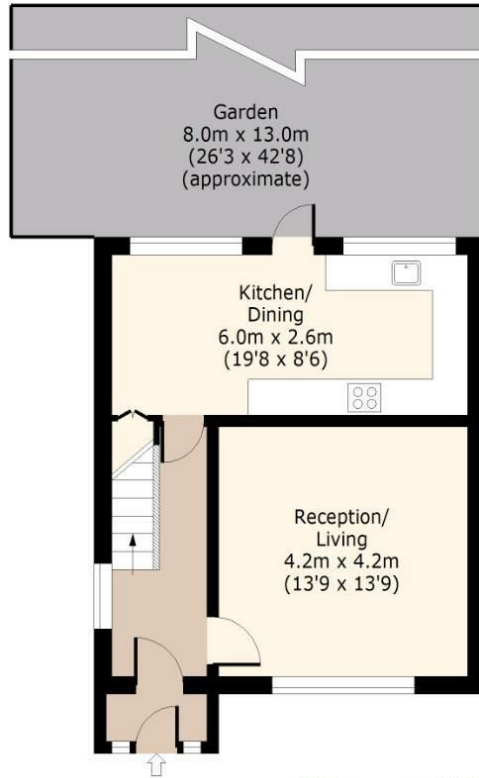




Chandler Road

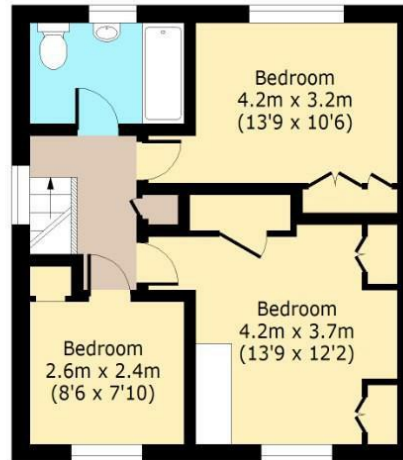
Ground Floor

Approx. 44.41 Sq. meters (478 Sq. feet)



First Floor

Approx. 44.03 Sq. meters (474 Sq. feet)



Total area: approx. 88.44 Sq. meters (952 Sq. feet)
For illustration purposes only - not to scale
www.lpaplus.com



BUTLER & STAG

☎ 01992 667666

🏠 4 Forest Drive, Theydon Bois, Essex, CM16 7EY

✉ theydon@butlerandstag.com

www.butlerandstag.uk

IMPORTANT NOTICE - These particulars have been prepared in good faith and they are not intended to constitute part of and offer or contract. We have not performed a structural survey on this property and the services, appliances an specific fittings have not been tested. All photographs, measurements, floor plans and distances referred to are given as a guide and should not be relied upon.